



**PROGRESS
ACTIVITY
REPORT**

**“Building a Local Government Alliance
for Resilience in Asia-Pacific” for
disaster-affected cities in Palu City,
Central Sulawesi, Indonesia**

Prepared by:
United Cities and Local Governments Asia-Pacific
(UCLG ASPAC)



BACKGROUND

The COVID-19 pandemic has changed many aspects of our lives and it directly affects to the economic growth at the local level. According to the Indonesian Ministry of Economic Creative, the COVID-19 pandemic has affected more than 90 % of Small Medium Scale Enterprises (SMEs). It has greatly affected the most vulnerable sectors and communities especially who live at prone disaster area such as Palu City, Central Sulawesi Province that is still in recovery phase from 2018 earthquake, tsunami, and liquefaction disaster.

In February, before the national strict social and physical distancing applied, UCLG ASPAC conducted the needs assessments to understand the requirements of the affected community in Palu City. The result shows that most of post disaster rehabilitation programme was focused on physical construction such as rebuilding houses, schools, hospital, and other public buildings and it has still lack of livelihood aspect including local economic empowerment. There are more than 1500 people waiting for humanitarian assistance, and 800 people have not received a compensation fund. Furthermore, the livelihood programme is focused on direct cash donation (money for establishing small business purposes) and indirect donation (providing a boat for fisherman, machine for production of goods, basic needs, food nutrition, shop and market retrofitting, and fish product training, basic training for new business development, etc). In addition, Palu City Government has requested UCLG ASPAC to include livelihood or LED into the CUF-UCLG ASPAC post disaster program.

Furthermore, Palu City Government has initiated LED programme called “Kelompok Usaha Bersama” or KUBE in 2016 that aims to increase the local economic development to support Small Medium Enterprises (SMEs). During the post disaster rehabilitation, this programme has been

reactivated in 2020 and according to Social Department of Palu City, there are more than 70 proposals received from community. Until June 2020, there are 76 KUBE proposals that have been received for assistance for business development. Therefore, CUF-UCLG ASPAC is committed to support the LED-KUBE proposals for helping Palu City in providing vulnerable community to start their small business.

OBJECTIVE

The report aims to:

- a. Report the coordination between stakeholders;
- b. Report the LED programme implementation;
- c. Update the budget plan.

PROGRESS REPORT

In the period of June to October 2020, UCLG ASPAC has already conducted several activities that included coordination with national government, identification of local economic development (LED), and building cooperation between targeted LED community group and local government. According to the signed MOU, purposes of the programme are as follows to:

- a. Purpose 1: Accelerate the effective of Early Warning System (EWS) and coordination with multi stakeholder
- b. Purpose 2: Build Public Facility and support the Local Economic Recovery (LED)
- c. Purpose 3: Provide Capacity Development and Learning

Through the activities, we have come to achieve the purpose with several progress as follows:

Purpose	Outcome	Activities	Progress
1. Accelerate the effective of Early Warning System (EWS) and coordination with multi stakeholder	1.1. Recommendation for the Palu City Early Warning System for Tsunami	- Training for Palu Local Disaster Management Agency on EWS community engagement	Postpone due to COVID-19 Expected result by February 2021
	1.2. Stakeholder Mapping and Need Assessment	- Coordination Meeting with Palu City Government for the updated needs (BPBD, Bappeda, PU, etc.) and NGO stakeholder mapping - Webinar: Accelerating the Small Medium Enterprises in Post Disaster (case of Palu City): 28 September 2020	Completed
2. Build Public Facility and support the Local Economic Recovery (LED)	2.1. Memorial Park for disaster commemoration in Palu City	- Coordination with PUPR, Bappenas, MOHA (Land clearance and permanent location for the site) - Preliminary Public consultation for participatory approach with ex-	In progress (coordination with Palu for the location)

Purpose	Outcome	Activities	Progress
		liquefaction community for memorial park design - In depth public consultation for Memorial Park Construction - Detailed Engineering Design Development (DED) - Bidding and procurement - Ground-breaking for memorial park site - Hand over process	Expected result by April 2021
	2.2. Selected three proposal of LED in Palu	- Proposal selection mechanism and criteria for LED - In-depth interview with the chosen LED proposal members. - Announcement for selected LED proposal and procurement - Training workshop on business model capacity	In progress (procurement and capacity development design) Expected result by December 2020
3. Provide Capacity Development and Learning	3.1. Reviewed Palu Recovery plan	- Training Workshop for strengthening the local government capacity in recovery and build back better	Postpone due to COVID-19 Expected result by February 2021
	3.2. Learning note and presented best practices	- Peer Learning Workshop on Building a Local Government Alliance and Resilience for Cities Facing Risk in Coastal Area (Case of 2018 Earthquake, Tsunami, and Liquefaction in Palu)	Postpone due to COVID-19 (waiting feedback from Palu City) Expected result by February 2021



Previous photo, Tsunami in Palu by AFPJewel Samad (2018).
Left photo, Street damaged by the disaster in Palu by Antara (2018)



Picture Above, A floating mosque collapsed due to the tsunami by Arif Nur Rokhman-Unsplash (2018).

TO-DO-LIST ACTIVITIES (October 2020 – April 2021)

1. Training for Palu Local Disaster Management Agency on EWS community engagement:
Period: November 2020-January 2021
 - Sending a formal letter to the Government of Palu City with Palu Local Disaster Agency (BPBD) request and needs assessment result and current existing EWS in Palu
 - Coordinating with National Disaster Management (BNPB EWS division) for community training/drill module.
 - Developing concept and agenda for the training.
 - Conducting training and drills together with BPBD and BNPB for EWS in Palu (January 2021)
2. Coordination with National Govt. Ministry of PUPR, Bappenas, MOHA, ATRBPN (Land clearance and permanent location for the site)
Period: September-December 2020
 - Conducting zoom meeting with each ministry especially ministry of PUPR
3. Preliminary Public consultation for participatory approach with ex-liquefaction community for memorial park design
Period: December 2020 – February 2021
 - Sending the formal letters to Palu City Mayor regarding the request of commitment for memorial park location (Balarooa area)
 - Engaging the community for public consultation phases (meetings with community)

- Developing the concept and agenda
4. In depth public consultation for Memorial Park Construction
Period: January 2021 – March 2021
 - Developing the concept and pre-design
 - Conducting consultation meetings for memorial park design (participatory approach)
 5. Detailed Engineering Design Development (DED)
Period: February-March 2021
 6. Bidding and procurement
Period: February 2021
 7. Ground-breaking for memorial park site
Period: March-April 2021
 8. Hand over process
Period: April-Dec 2021
 9. Announcement for selected LED proposal and procurement
Period: October 2020 (in progress)
 10. Training workshop on business model capacity
Period: October - December 2020 (in progress)
 - Coordinating with Social Department of Palu City for online peer to peer training workshop
 - Developing concept and agenda
 - Conducting online workshop (November-December 2020)
 11. Training Workshop for strengthening the local government capacity in recovery and build back better
Period: January 2021 – February 2021
 - Sending a formal letter to the Government of Palu City with Palu Local Disaster Agency (BPBD)
 - Coordinating with National Disaster Management (BNPB Recovery division) for training module.
 - Developing concept and agenda for the training.
 - Conducting training in Palu City (February 2021)
 12. Peer Learning Workshop on Building a Local Government Alliance and Resilience for Cities Facing Risk in Coastal Area (Case of 2018 Earthquake, Tsunami, and Liquefaction in Palu)
Period: November 2020 – February 2021
 - Revising and updating the concept note and agenda in coordination with CUF and UCLG Learning
 - Sending a formal letter to the Government of Palu City Mayor for the proposed schedule of Peer Learning
 - Workshop preparation (testing the resilient module of UCLG)
 - Conducting peer learning in Palu City (February 2021)

RESULT (June – October)

1. Local Economic Recovery (LED) in Palu City

Palu City Government has launched one programme called “Kelompok Usaha Bersama” or KUBE in 2016 that aims to increase the local economic development to support Small Medium Enterprises (SMEs). During the post disaster rehabilitation, this programme is reactivated in 2020 and according to Social Department of Palu City Government, there are more than 70 proposals received from community. In June 2020, there were 76 KUBE proposals that have received assistance or support for business development by Palu City Government. According to the needs assessment result in February, Palu City requested to allocate the budget under CUF-UCLG ASPAC Post Disaster Programme for supporting the affected small medium enterprises (KUBE). Therefore, UCLG ASPAC and CUF have agreed to support at least three of the KUBE proposals that need assistance to start their businesses. Between June-July, UCLG ASPAC received seven proposals from Palu City for selection. Most of proposals were newly established small business and Department of Social of Palu City was involved to provide recommendation and opinion regarding the proposal review.

The programme aims:

1. Support the establishment of local SMEs affected by disasters;
2. Provide assistance for starting the business plan/model;
3. Capacitate the selected SMEs with development training workshop.

The selection step is designed into five steps as follow:

1. First, coordination with Palu City Social Department for gathering proposals and conducting external survey for proposals’ validation;
2. Second, internal proposal selection in which five nominated proposals will be chosen and selected proposals should have a recommendation from Palu City Social Department;
3. Third, interview process will be given to the top five selected proposals;
4. Forth, selected SMEs will be granted the assistance including materials and trainings and workshops on local business development.



Left Picture, Situation after tsunami in Palu by New York Post (2018)

Right Picture, Tsunami and earthquake victim crying in Palu by Antara (2018)

Criteria:

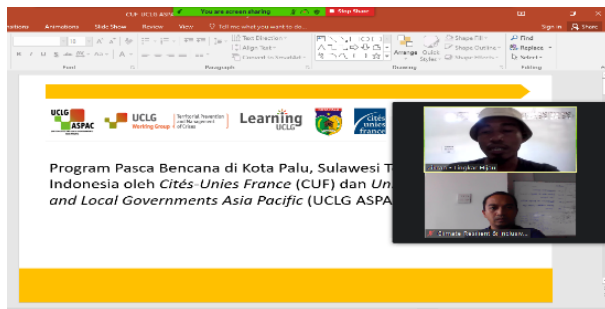
Support will be given based on the following criteria

- Affected community who lost their jobs or business due to disasters.
- Type of business proposal must have local contents or products.
- Minimum five people or more as beneficiaries in one business proposal.
- Having initiative or experience before (for example: 2 years before disaster).
- Gender balance (prioritise women groups or community based in Palu City)
- Having safe environment and resilience measures.
- Proposed proposal should be endorsed by Palu City Government (Social Department).
- Committed to participate the process (training and business plan development).
- Having opportunity to sustain.
- Willingness to share their practical experiences to others.

Here are the selected proposal as follows (List of detailed proposal attached);

No.	Selected LED Proposal	Type of business	Budget
1	Lingkar Hijau	Urban Farming and Resiliency (waste management and agriculture)	Rp. 55,160,000
2	Arsyilah Bakery (Balaroo)	Bakery processing mainly for house waive and women empowerment	Rp. 33,401,000
3	Gawalise Printing (Balaroo)	Clothes printing (youth empowerment)	Rp. 21,720,000

Interview:



Pictures, Final Interview with three selected KUBE proposals

LED Programme Timeline:

Activity	Month	Jun	Jul	August	Sept	Oct	Nov	Dec
Conduct the first coordination with Social Department, Palu City Government		█						
Assess and filter KUBE proposals based on UCLG ASPAC's criteria			█					
Assess non-KUBE Proposals			█	█				
Interview non-KUBE proposal & conduct field visits (By Field Officer)				█				
Select the Final Top 5 of Proposals				█				
Hold final interview by UCLG ASPAC					█	█		
Conduct procurement process of the 3 chosen proposals (market assessment, bidding process, procure, transfer/payment)						█	█	█
Organize training and capacity building for small business and social enterprises (Webinar using zooms)							█	█
Do the production and handover								█

2. Webinar: Accelerating the Small Medium Enterprises (SMEs) in Post Disaster (Case of Palu City)

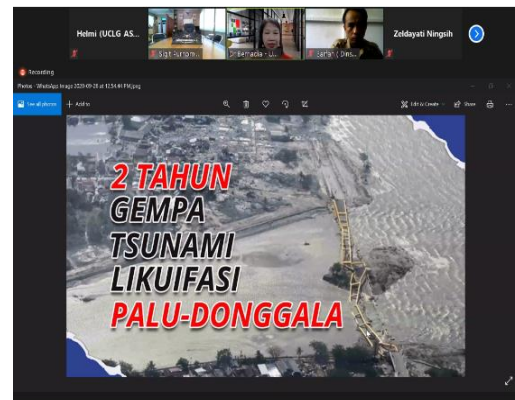
On 28 September, UCLG ASPAC in collaboration with Palu City Government organised the webinar on Accelerating the Small Medium Enterprises (SMEs) Sector for Post-Disaster Rehabilitation in Palu. The event was participated by 56 participants from national and local governments and it was conducted in Bahasa Indonesia. The key note presentation was delivered by Director Recovery and Rehabilitation of National Disaster Management Agency (BNPB), Mr. Yolak Dalimunthe, he presented the strategy for economic recovery and improvement in post-disaster areas in the Central Sulawesi region in 2020 consisting of a Post-Disaster Needs Assessment and a Post-Disaster Action and Reconstruction Plan have started, such as building houses from the government, NGO, etc.

Post-disaster recovery does not only focus on physical recovery, but socio-economic activities must coincide with and synergize with the regional apparatus organizations to be sustainable. Besides that, also provide further assistance to the SMEs group to carry out business development which consists of assistance to improve product quality, assistance to improve marketing,

assistance for group business legality so that the group can develop sustainably (business meeting activities), and business meeting activities in coordination with local government, ODP, private parties, etc.

Palu City Government was represented by Mr. Sarfan Social Department of Palu city. He shared about 2018 disaster; several areas in Palu city were included in the red zone where many lost their homes and residents in the area. The Government of Palu city in 2017 issued a regulation on infrastructure assistance to the poor. In 2018 should have run optimally, but with the disaster, the program did not go well. The Government of Palu City initiated the KUBE programs that can be implemented in 2020. The Social Department will carry out a joint business group facility and infrastructure program.

Nearly 150 groups in several sub-districts and their special areas are chosen by the Social Service of which there are 76 KUBE groups that must be helped in 2020. Nearly 150 KUBE’s groups in several sub-districts and regions were specifically selected to receive the assistance, where there are 76 SMEs/KUBE groups that must be assisted by 2020. Regarding planning in 2021, the Government will intervene with approximately 1600 KUBE proposal to accelerate the economic recovery process by 2021 due to the COVID-19 pandemic.



Left Picture, Webshare poster by UCLG ASPAC (2020).

Right Picture, The Webshare activities by UCLG ASPAC (2020).

The event was concluded by closing remarks from Dr. Bernadia Tjandradewi (Secretary General UCLG ASPAC), She emphasized that the Palu Government has done is very good, how the Palu City Government Accommodated all the needs or desires of the community, so that assistance can be right on target. The program will be right on target if there is cooperation from all parties, both from the city government and from the community and other parties. Lesson learnt from the COVID-19 pandemic is very important; there are not so many completed data, especially for people who have lost their jobs. This data must be updated especially because of the condition of COVID-19 so how can we provide the right assistance for everyone. UCLG connects more than 250,000 city and regional governments, especially in Palu, where assistance provided by City Union France in collaboration with UCLG ASPAC in Palu for supporting the local small medium enterprises to restart their business.

BUDGET

As per October 2020, we have been conducting several activities and the remaining budget is 54,672.24 USD (from the first instalment). Those remaining budget will be disbursed for these following activities:

1. Training for Palu Local Disaster Management Agency on EWS community engagement
2. Coordination with National Govt. Ministry of PUPR, BAPPENAS, MOHA, ATRBPN (Land clearance and permanent location for the site)
3. Preliminary Public consultation for participatory approach with ex-liquefaction community for memorial park design
4. In depth public consultation for Memorial Park Construction
5. Detailed Engineering Design Development (DED)
6. Bidding and procurement
7. Ground-breaking for memorial park site
8. Hand over process
9. Announcement for selected LED proposal and procurement
10. Training workshop on business model capacity
11. Training Workshop for strengthening the local government capacity in recovery and build back better
12. Peer Learning Workshop on Building a Local Government Alliance and Resilience for Cities Facing Risk in Coastal Area (Case of 2018 Earthquake, Tsunami, and Liquefaction in Palu)

Please refer to the attached budget for the details and further explanation.



UCLG ASPAC

Jakarta's City Hall Complex Building H, 21 th Floor
Jl. Medan Merdeka Selatan No.8-9 Jakarta 10110, Indonesia
Tel. (62-21) 389 01801, Fax. (62-21) 389 01802

www.uclg-aspac.org



UCLG ASPAC



@uclgaspac



@uclgaspac